



ADAS AVM

Product Overview

HSD
Fakra



JST



AVM
Cam



ADAS
Cam



DMS
Cam

1 ECU, all-in-one box

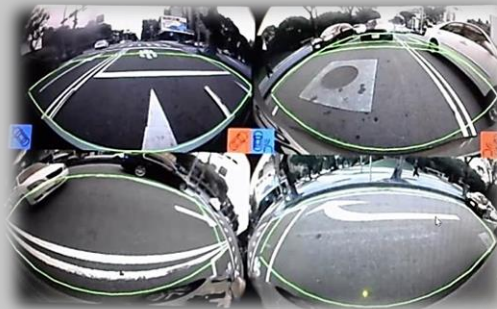
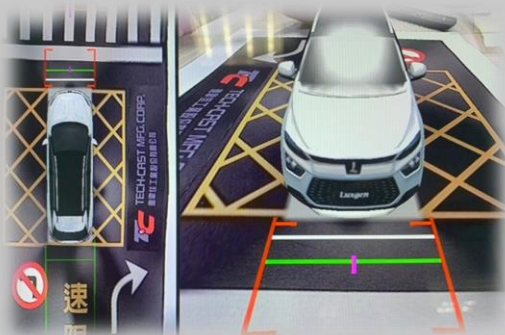
- Technologies with self-development
- Deep learning architectures

6 Channels of Cameras

- 4 wide-angle AVM cameras
- 1 ADAS camera
- 1 DMS camera

Perfect Driving Solution

- ADAS SAE Level 1~2
- DMS/ Fleet Management



Product Features

AVM+ ADAS function- 5 Cameras

AVM	3D AVM Mode/Multi-View Mode
MOD	Dynamic/static driving auxiliary lines are available at any vehicle speed
LDWS	0-0.8m/s speed of horizontal departure, including curved lanes
BSD & ODA	Vertical distance $\leq 15m$ Horizontal distance $\leq 3m$
FCWS	Leaving vehicle from front $\leq 10m$

- Customized vehicle model, visible vehicle interior
- Bus/Truck/Commercial Vehicle/ Heavy-Duty applicable
- Build-in DVR (up to 256GB)

DMS function- 1 Camera

Detection	Head/eye position, phone, closed eyes, smoking, seat belt detection
-----------	---

Camera Specification

AVM Camera

Image Sensor	1/3" CMOS
Image Resolution	1280 x 720, AHD 720P
View Angle	H 180 \pm 5° / V 138 \pm 5°
Min. Illumination	$\geq 0.5Lux@3M$
Dimension	23*23*36(mm) w/o case

ADAS Camera

Image Sensor	1/3.7" CMOS
Image Resolution	1280 x 720, AHD 720P
View Angle	H 62 \pm 5° / V 35 \pm 5°
Min. Illumination	$\geq 0.5Lux@3M$
Dimension	62.8*87.8*40.8(mm)

DMS Camera

Image Sensor	1/3.7" CMOS
Image Resolution	1280 x 720, AHD 720P
View Angle	H 62 \pm 5° / V 35 \pm 5°
Min. Illumination	940nm IR LEDs
Dimension	33.7*33.7*39.8(mm)

- Company Add.: No. 4-1, Fengtian Rd., Dapi Township, Yunlin County 63147, Taiwan (R.O.C.)
- Tel.: +886-5-591-6351 Fax : +886-5-591-5161
- Email: sales.tpe@techcast.com.tw
- Company Website: <http://www.techcast.com.tw>

