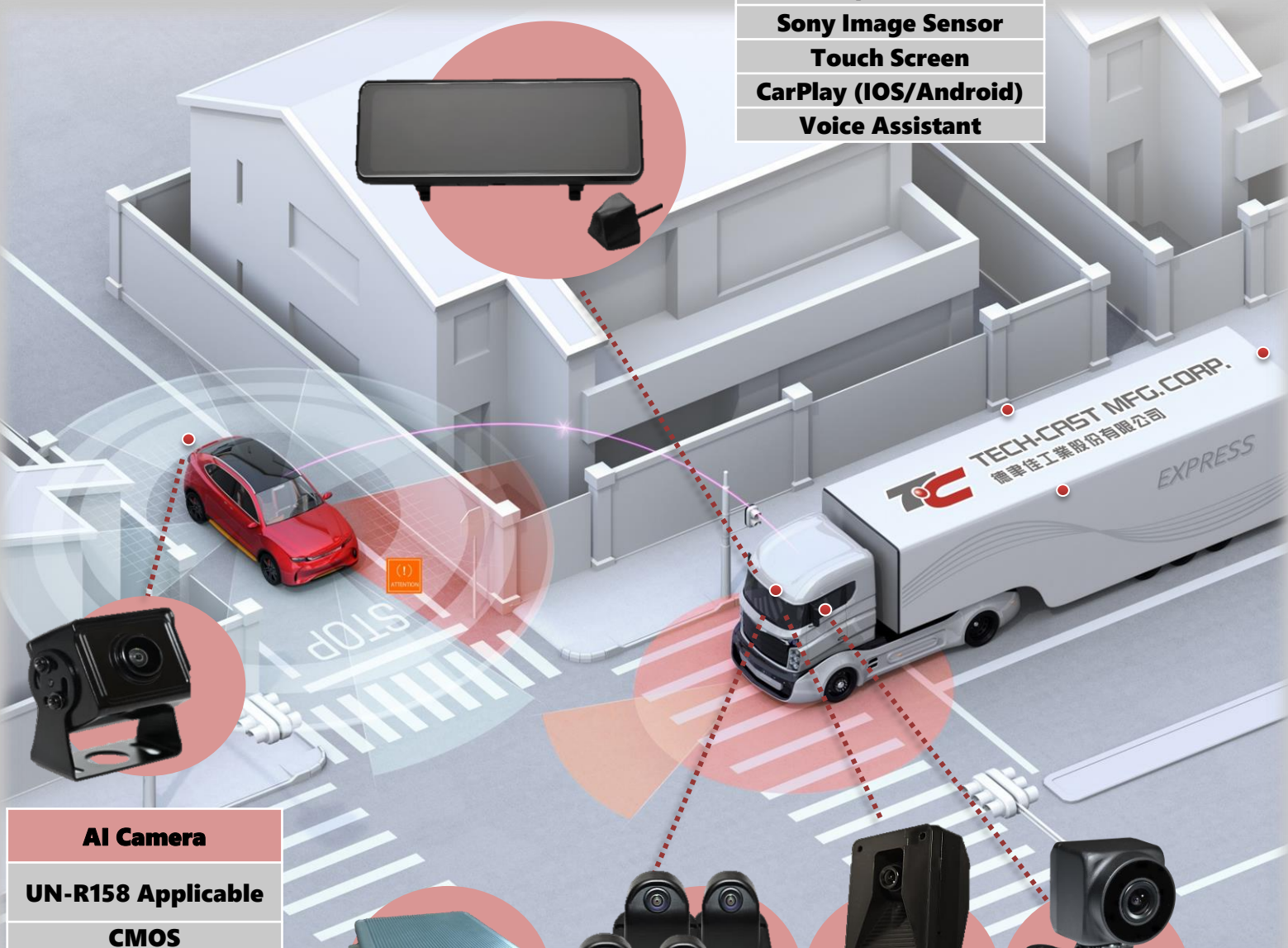




ADAS

Total Solution Provider

- E- Mirror+ DVR**
- Front/Rear View**
- Sony Image Sensor**
- Touch Screen**
- CarPlay (IOS/Android)**
- Voice Assistant**



- AI Camera**
- UN-R158 Applicable**
- CMOS**
- AEC-Q100 Grade 2**
- FCW/ RCW**
- LDW/ BSD**



- Standard AVM**
- 2D/3D Display**
- High Efficient Calibration**
- Applicable to Vehicle Length 4-15M**

- ADAS AVM**
- 540° Rotation Display**
- BSD/ (S)MOD/ LDWS**
- Built-in DVR (Up to 256G)**
- Exquisite Customized Vehicle Icon**

- DMS Camera**
- Head Position Detection**
- Phone Detection**
- Snooze Detection**
- Smoke Detection**

Camera

Driving Safety Solution

AHD/ TVI



Specification	CER48M	CER55M	CEC51M	CEC57M
Image Sensor	1/3" CMOS	1/3" CMOS	1/3" CMOS	1/4" CMOS
Resolution	1920x1080	1280x720	1280x960	1280x720
FOV	H133°/V72°/D150°	H135°/V85°/D160°	H180°/V138°/D220°	H180°/V110°/D200°
Min. Illumination	≥ 0.5 Lux @ 3M	0 Lux with IR @ 8M	≥ 0.5 Lux @ 3M	≥ 0.5 Lux @ 3M
IP Level	IP 69K	IP 69K	IP 69K	IP 69K
Working Temp.	- 30°C ~ +75°C	- 30°C ~ +80°C	- 30°C ~ +85°C	- 40°C ~ +80°C
MIC	—	V	—	—
WDR	V	—	V	V
Dimension (W/H/D)	37/27/30mm	34/38/38mm	23/23/36mm	23/23/34.2mm

CVBS



Specification	CER44M	CEC39M	CER32M	CES12M
Image Sensor	1/3" CMOS	1/4" CMOS	1/4" CMOS	1/4" CMOS
Resolution	720x480	720x480	720x480	720x480
FOV	H135°/V80°/D155°	H155°/V115°/D190°	H123°/V95°/D154°	H123°/V95°/D154°
Min. Illumination	≥ 0.5 Lux @ 3M	≥ 0.5 Lux @ 3M	0Lux with IR	0.5 Lux at F2.0
IP Level	IP 69K	IP 67	IP 68	IP 68
Working Temp.	- 30°C ~ +75°C	- 20°C ~ +70°C	- 30°C ~ +70°C	- 30°C ~ +70°C
MIC	—	—	V	—
Dimension (W/H/D)	37/27/33mm	23.5/23.2/23.5mm	27/27/35mm	27/27/28mm



E-Mirror **Built-in DVR**

Specification	MOD102
Panel Size	10.88 Inch
Resolution	IPS 1920xRGBx480
Video Input	2CH AHD 1280P/720P @25FPS
LCD Profile Ratio	16:9
Brightness	550 cd/m2
Input Format	Switch (PAL /AHD)
Working Voltage	DC 9V ~32V
Power Consumption	< 12W
Working Temp.	- 20°C ~ +70°C
Memory Card	Up to 32G~128G@10
Dimension(W/H/D)	258 x 71x 42 mm ±5mm



- Front/Rear View
- Sony Image Sensor
- Touch Screen
- CarPlay (IOS/Android)
- Voice Assistant

Monitor **7 Inch LCD**



Specification	MOD771	MOD772	MOD751
Panel Size	7 Inch	7 Inch	7 Inch
Resolution	1024RGB(W)x 600(H)	1024RGB(W)x 600(H)	800RGB(W)x 480(H)
Video Input	3	2	3
LCD Profile Ratio	16:9	16:9	16:9
Brightness	> 400 cd/m2	> 320 cd/m2	> 400 cd/m2
Input Format	Auto-Switch NTSC/ PAL /AHD	Auto-Switch NTSC/ PAL /AHD	Auto-Switch NTSC/ PAL
Working Voltage	DC 12V ~24V	DC 12V ~24V	DC 10V ~36V
Power Consumption	< 12W	< 12W	< 6W
Working Temp.	- 20°C ~ +70°C	- 20°C ~ +70°C	- 20°C ~ +70°C
Memory Card	—	Up to 128G (SD Class 10)	—
Dimension(W/H/D)	180/125/25mm	176/125/68mm	182/120/29mm



Door Lock

Actuator/ Central Lock

Clutch Type

IPX4



Specification	TL5000W	TL5000B	TL5000F
Working Voltage	12V ±1.5 V	12V ±1.5 V	12V ±1.5 V
At Stall Current	3.25±1.25A	4.5±1A	2.5~ 5A
Working Temp.	-40°C~ +70°C	-40°C~ +70°C	-20°C~ +60°C
Loaded Force Push/Pull	> 5.5kg	> 5.5kg	> 4.5kg
IP Level	IPX4	—	—
Travel Distance	20.5 ± 1mm	20.5 ± 1mm	20.5 ± 1mm
Weight	2W: 100g ± 5g 5W: 110g ± 5g	2W: 90g ± 3g 5W: 102g ± 3g	2W: 90g ± 3g 5W: 102g ± 3g

Gear Type



Specification	TL6000C	TL6000Z
Working Voltage	12±1.5V	12±1.5V
At Stall Current	5.5±2A	4.3±1.5A
Working Temp.	-40°C~ +60°C	-40°C~ +70°C
Loaded Force Push/Pull	3kg	3kg
Travel Distance	21 mm± 1 mm	21 mm± 1 mm
Weight	2W: 100 ± 3g 5W: 110 ± 3g	2W: 100 ± 3g 5W: 110 ± 3g



Specification	TL6204C	Control Module
Working Voltage	12±1.5V	9V~15V
At Stall Current	5.5±2A	Working Current 15A/12V
Working Temp.	-40°C~ +60°C	-20°C ~ +60°C
Loaded Force Push/Pull	3kg	N/A
Travel Distance	21 mm± 1 mm	N/A
Weight	2W: 100 ± 3g 5W: 110 ± 3g	60g ± 5g

12V
24V



FC CE

Standard AVM



AVM ECU Specification

Working Voltage	DC 9V ~ 30V
Output Terminal	RCA Connector 4Pin Metal Connector
GPIO	Input GPIO*3 for Triggers
Dimension	13.2*9.7*2.9(cm)

Features:

- High Efficiency of Calibration (OE friendly)
- Commercial Vehicle / Heavy-Duty applicable
- Perfect Stitching Image
- 2D / 3D View Modes

AVM ECU Accessories



Cameras Accessories



7" LCD Monitor Accessories



Camera Specification

Image Sensor	1/3" CMOS
Resolution	1280 x 720
Video Output	AHD720P @30/60fps
Water Resistance	IP69K
View Angle	H 180° / V 138°
Min. Illumination	≥ 0.5Lux@3M
Dimension	23*23*36(mm)

Monitor Specification

Resolution	800RGB(W)*480(H)
Video Input	NTSC / PAL
Brightness	≥ 400 cd/m ²
LCD Ratio	16:9
Speaker	Built-in
Dimension	182*120*29(mm)





ADAS AVM

Product Overview

HSD
Fakra



JST



AVM
Cam



ADAS
Cam



DMS
Cam

1 ECU, all-in-one box

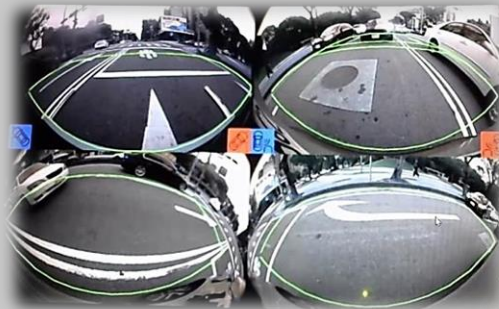
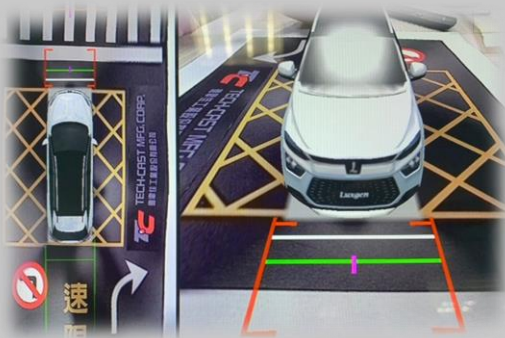
- Technologies with self-development
- Deep learning architectures

6 Channels of Cameras

- 4 wide-angle AVM cameras
- 1 ADAS camera
- 1 DMS camera

Perfect Driving Solution

- ADAS SAE Level 1~2
- DMS/ Fleet Management



Product Features

AVM+ ADAS function- 5 Cameras

AVM	3D AVM Mode/Multi-View Mode
MOD	Dynamic/static driving auxiliary lines are available at any vehicle speed
LDWS	0-0.8m/s speed of horizontal departure, including curved lanes
BSD & ODA	Vertical distance $\leq 15m$ Horizontal distance $\leq 3m$
FCWS	Leaving vehicle from front $\leq 10m$

- Customized vehicle model, visible vehicle interior
- Bus/Truck/Commercial Vehicle/ Heavy-Duty applicable
- Build-in DVR (up to 256GB)

DMS function- 1 Camera

Detection	Head/eye position, phone, closed eyes, smoking, seat belt detection
-----------	---

Camera Specification

AVM Camera

Image Sensor	1/3" CMOS
Image Resolution	1280 x 720, AHD 720P
View Angle	H 180 \pm 5° / V 138 \pm 5°
Min. Illumination	$\geq 0.5Lux@3M$
Dimension	23*23*36(mm) w/o case

ADAS Camera

Image Sensor	1/3.7" CMOS
Image Resolution	1280 x 720, AHD 720P
View Angle	H 62 \pm 5° / V 35 \pm 5°
Min. Illumination	$\geq 0.5Lux@3M$
Dimension	62.8*87.8*40.8(mm)

DMS Camera

Image Sensor	1/3.7" CMOS
Image Resolution	1280 x 720, AHD 720P
View Angle	H 62 \pm 5° / V 35 \pm 5°
Min. Illumination	940nm IR LEDs
Dimension	33.7*33.7*39.8(mm)

- Company Add.: No. 4-1, Fengtian Rd., Dapi Township, Yunlin County 63147, Taiwan (R.O.C.)
- Tel.: +886-5-591-6351 Fax : +886-5-591-5161
- Email: sales.tpe@techcast.com.tw
- Company Website: <http://www.techcast.com.tw>

